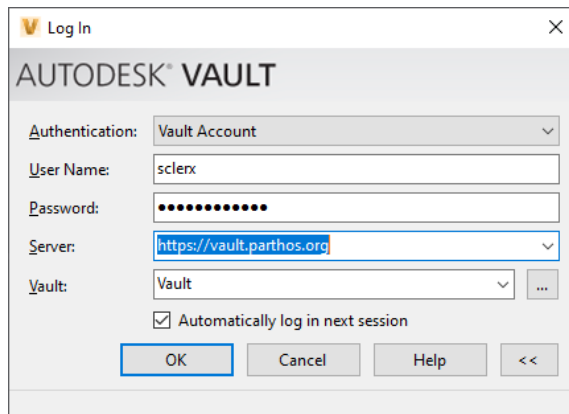


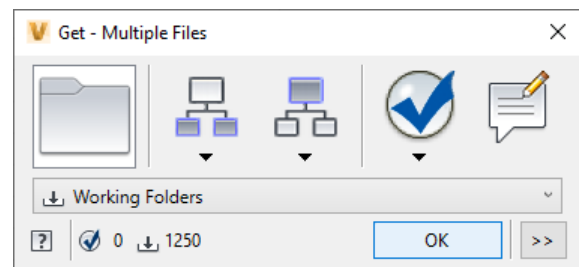
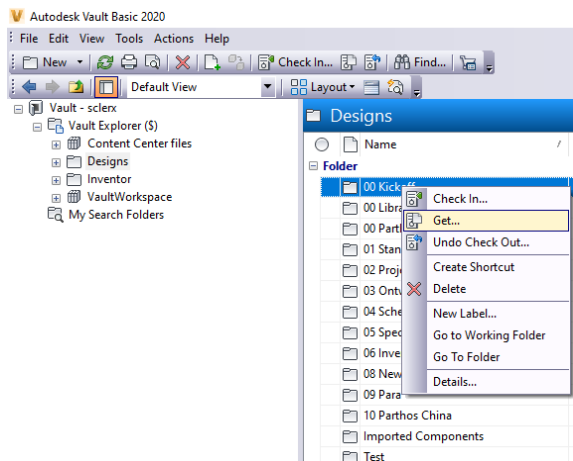
# Vault, inventor instruction

## Vault

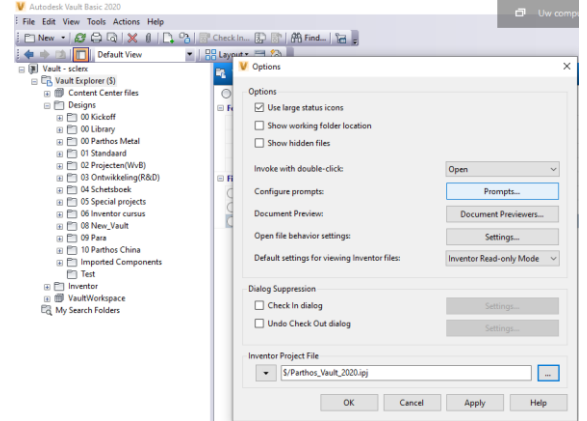
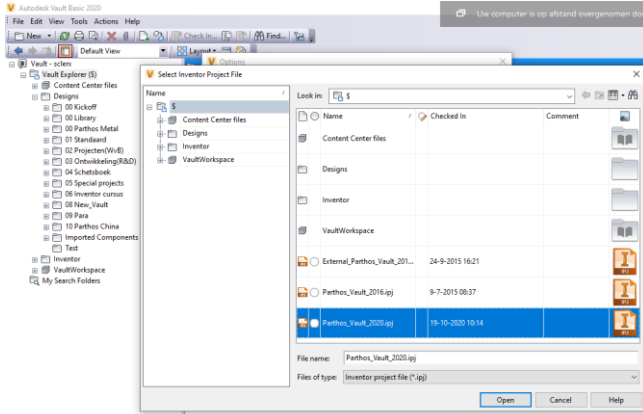
1. Open Inventor > Close Inventor
2. Open Vault Basic Client
3. Fill in your Vault username (doesn't have to be the same as for the Parthos network)
4. Fill in your Vault password (doesn't have to be the same as for the Parthos network)
5. Fill in the server, <https://vault.parthos.org>
6. Check the "Automatically log in next session" box



7. Go to Vault/Vault Explorer (\$) / Designs /
8. Right click on "00 Kickoff" → "Get" → "OK"

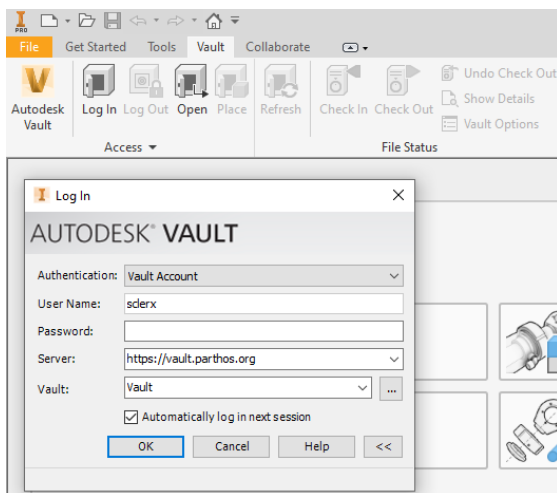


9. Go to Vault/Vault Explorer (\$)/
10. Double click on “Parthos\_Vault\_20XX.ipj”
11. Do you want to check it out now? : **No**
12. Go back to the Vault Basic Client
13. Click on the menu “Tools” → “Options” → “...” → Parthos\_Vault\_20XX.ipj → “Open” → “OK”

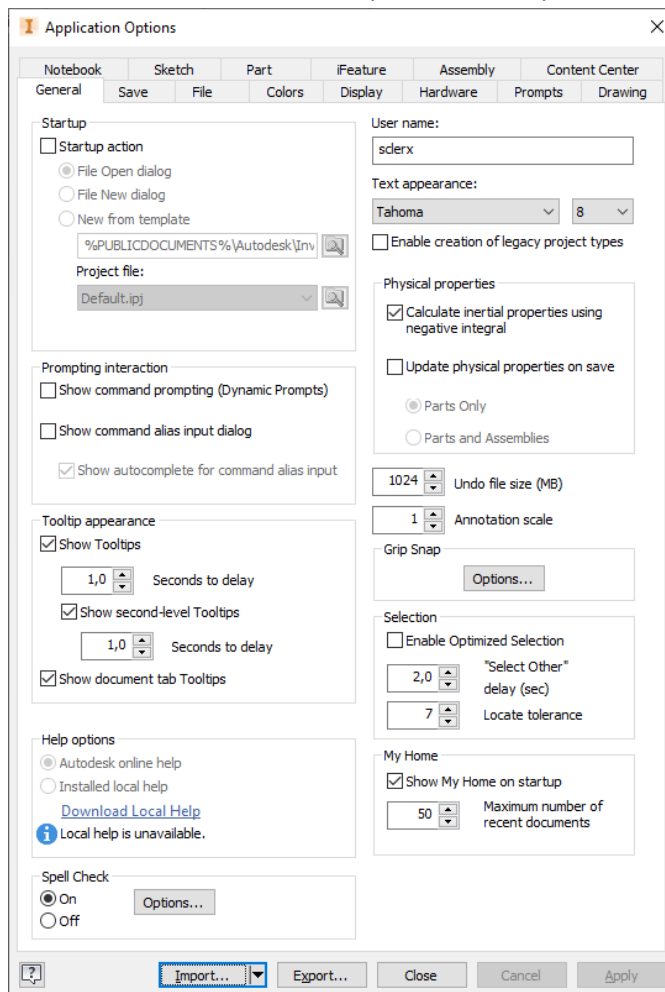


## Inventor

1. Open Inventor
2. Go to tab “Vault” → “Log In”
3. Fill in your Vault username (doesn’t have to be the same as for the Parthos network)
4. Fill in your Vault password (doesn’t have to be the same as for the Parthos network)
5. Fill in the server, <https://vault.parthos.org>
6. Check the “Automatically log in next session” box



7. **Only** take the following steps when you work on **another location than Parthos B.V.** or when there is an **update** of the Inventor settings.
- a. Click on the menu “File” → “Options” → “Import...”.



- b. Select the file "C:\VaultWorkspace\Designs\00 Kickoff\Application Options\ApplicationOptions.xml"
- c. Click on “Open”
- d. Click on “OK”
- e. Close Inventor

**Ready**